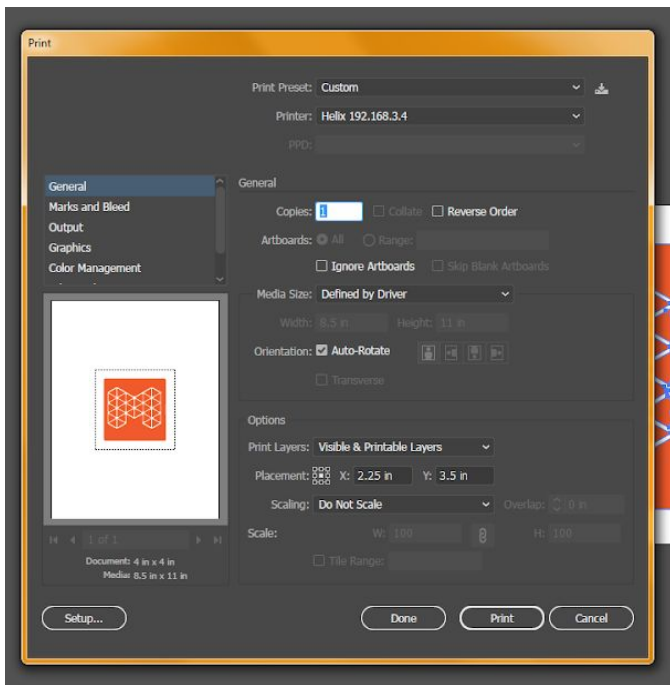


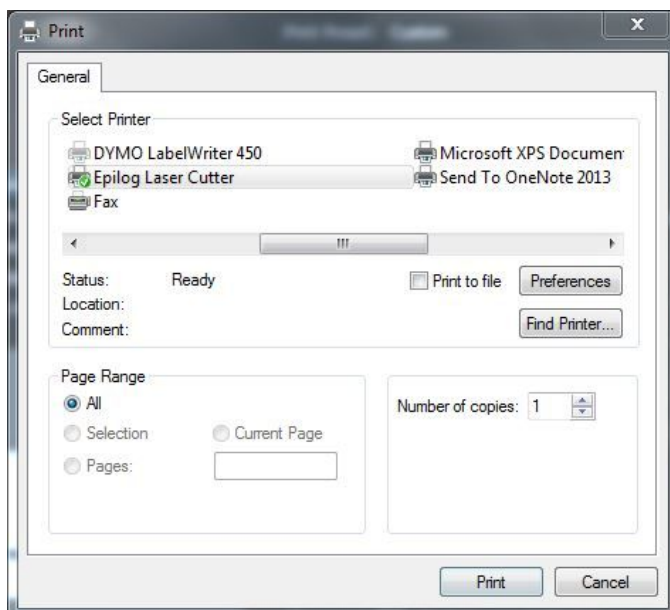
Epilog Laser Cutter

Open your design in Adobe Illustrator. The artboard dimensions should match the size of the laser, which is 18”h by 24”w. Double check that any line you want to cut all the way through is set to a 0.001 stroke weight. If you have something that needs to be rastered, make sure it is filled in black. Only what is black on your design will etch in your print.



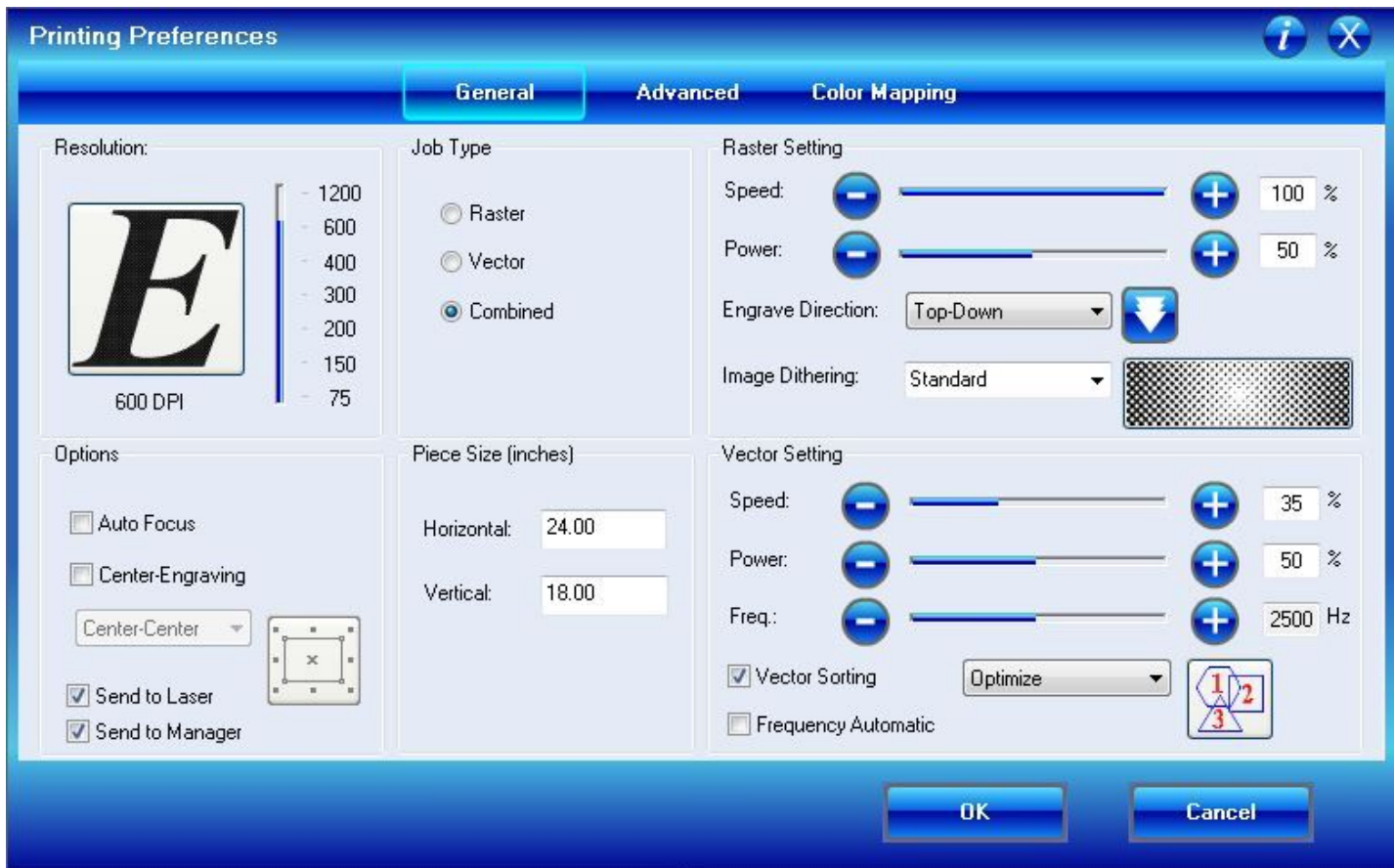
Once your design is ready to go, go to File > Print

When the Print Dialog box opens, click on SETUP in the bottom left hand corner.



After that Dialog box opens, click on PREFERENCES near the right hand side.

This the Epilog Printing Preferences popup window.

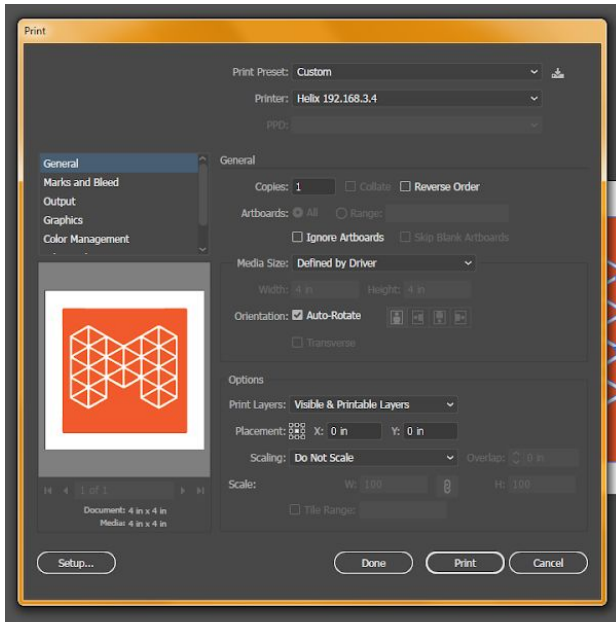


BEFORE YOU PRINT:

- Change the PIECE SIZE to match your document size.
- Set to Raster if you are engraving only. Vector if you are cutting only. And Combined if you are doing both on the same job.
- Set the Speed and Force according to your material. Refer to the setting guide hanging above the laser work area to know what specific settings to use.
- Make Sure auto-focus is checked, unless otherwise instructed by a Maker on Duty.

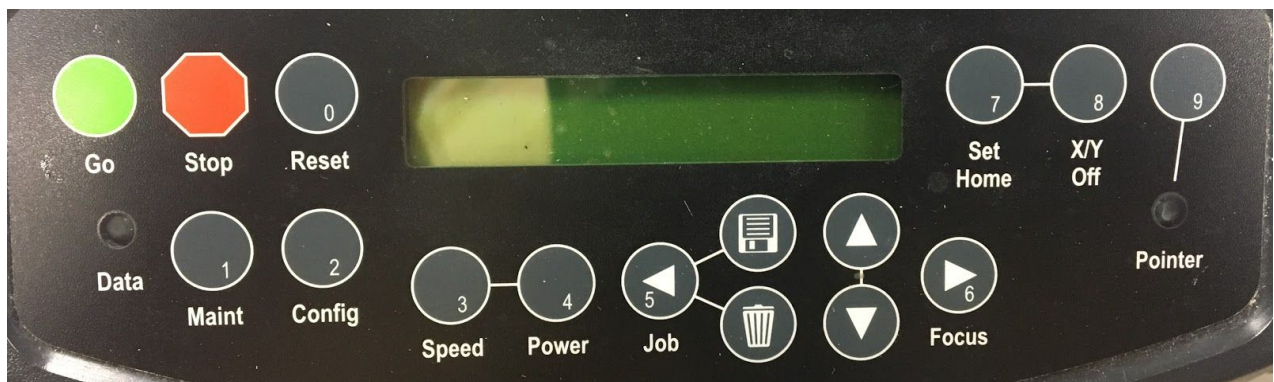
Once everything is set, click on OK, then click PRINT on the second dialogue box.

Before clicking the final PRINT box, double check that the preview is exactly the size you want it, DOCUMENT and MEDIA sizes are the same, and the PLACEMENT is 0,0. If they are not, just run through the SET UP and PREFERENCES again. You do not need to change any settings, sometimes it just needs to go through the process a second time.



Once everything looks right (compare this image to the one at the beginning), go ahead and click the final PRINT button. This sends the file to the machine. [NOTE: The laser has to be turned on before sending.]

Using the Epilog Laser Panel Controls



You may place your material in the top left corner of the tray. If the tray is too high to easily put your material in, press X/Y OFF -> GO. You may now use the up and down arrows to move the tray up and down. Once the tray is at a good height, press RESET.

Once the file is sent to the machine, and the exhaust fan (the switch is located on the column next to Boss laser) is on, you may hit the green GO button.

Rotary Tool

If you wish to use the rotary tool, ask a Maker on Duty to help you install it.

Never plug in or unplug the rotary tool when the machine is powered ON.

Change your artboard width to the height of the piece you are etching on, and the height of the artboard to the circumference of your piece. Rotate your artwork 90 degrees counter-clockwise and place it where you would like it on the artboard. You need to do this because the rotary tool holds the object sideways in the laser.